

Bethany's Waltz

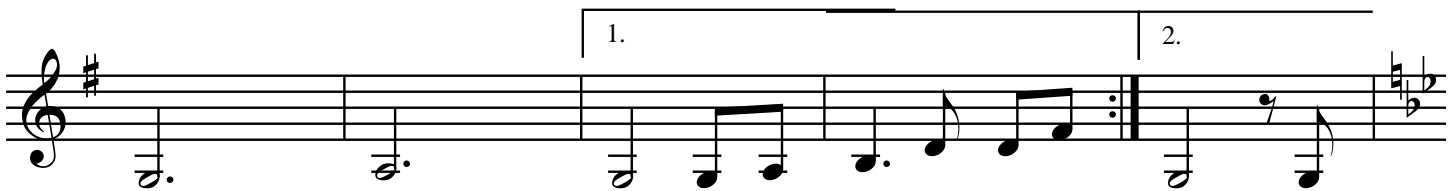
Casey Willis

Key of G

Harmony Fiddle

The musical score for "Bethany's Waltz" is written for a fiddle in the key of G major (one sharp) and 3/4 time. It consists of seven staves of music. The first staff begins with a treble clef, a key signature of one sharp (F#), and a 3/4 time signature. It starts with a whole rest, followed by a repeat sign, and then a sequence of half notes: G4, A4, B4, and C5. The subsequent staves continue the melody with various rhythmic patterns, including eighth and sixteenth notes, and repeat signs. The key signature remains G major throughout the piece.

Bethany's Waltz



Key of Bb



Bethany's Waltz

